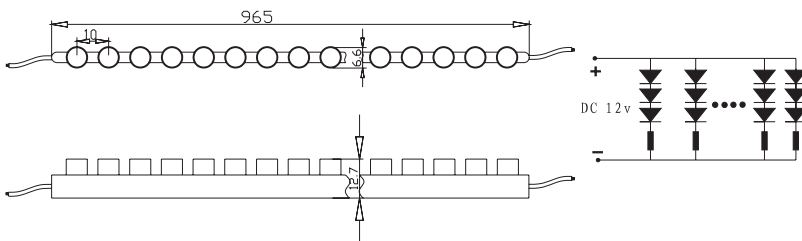


# SC-DWF

## Dip LED type Fogstrip™

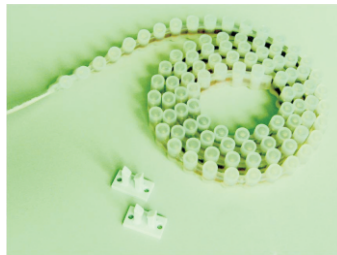


### Dimension drawing (Unit:mm)



### Features

- Perfect light consistency thanks to wide beam angle
- “Whole body” emitting effect enables accent light decoration
- Versatile accessories for installation
- Almost no temperature, low power consumption



### Application

- Backlight or edge lighting for signage and channel letters
- DIY lights for home use
- Path and contour marking
- Decorative lights for holiday, event, show, exhibition

Model Number	Color	Length (m)	LED Q'ty	LED Type	Light Output (lumen)	Beam Angle (degrees)	Voltage (V DC)	Current (Amps)	Max. Power Consumption (W)	Continuous Connection (m)
SC-DWF-R	Red	1.0	96	4mm dip LED	200	100	12	0.64	7.68	3
SC-DWF-Y	Yellow	1.0	96		200	100	12	0.64	7.68	3
SC-DWF-B	Blue	1.0	96		120	100	12	0.64	7.68	3
SC-DWF-G	Green	1.0	96		200	100	12	0.64	7.68	3
SC-DWF-W	White	1.0	96		200	100	12	0.64	7.68	3
SC-DWF-WW	Warm White	1.0	96		150	100	12	0.64	7.68	3

## Safety Information

- The strip itself and all its components may not be mechanically stressed.
- Assembly must not damage or destroy conducting paths on the circuit board.
- Installation of LED ribbon (with power supplies) needs to be made with regard to all applicable electrical and safety standards. Only qualified personnel should be allowed to perform installations.
- Correct electrical polarity needs to be observed. Wrong polarity may destroy the strip.
- Parallel connection is highly recommended as safe electrical operation mode.
- Serial connection is not recommended. Unbalanced voltage drop can cause hazardous overload and damage the strip.
- Please ensure that the power supply is of adapters power to operate the total load.
- When mounting on metallic or otherwise conductive surfaces, there needs to be an electrical isolation points between strip and the mounting surface.
- Pay attention to standard ESD precautions when installing the strip.
- Damaged by corrosion will not be honored as a materials defect claim.

It is the user's responsibility to provide suitable protection against corrosive agents such as moisture and condensation and other harmful elements.

### ※ Packing information

